



manufacturer of

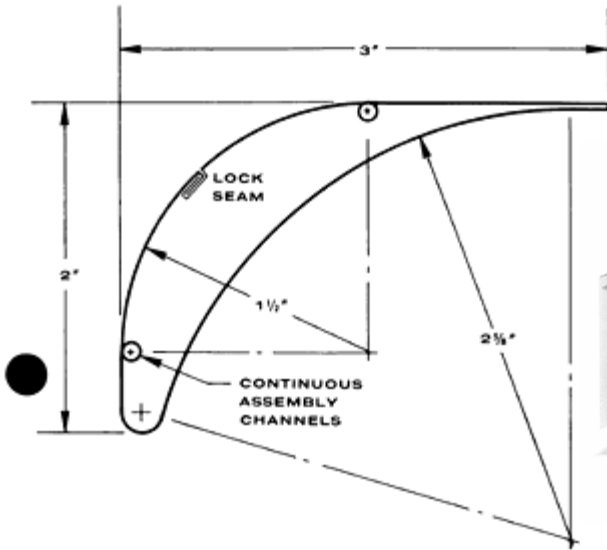
H-E-P Turning Vanes
High Efficiency Profile

Aero Dyne Sound Control Co.
 P.O. Box 1455
 Englewood, FL 34295
Phone: (800) 522.2423
Fax: (941) 473.9320
Email: info@aero-dyne.net
Website: www.HEPVanes.com

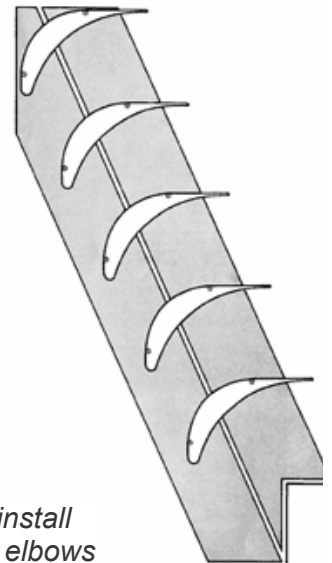
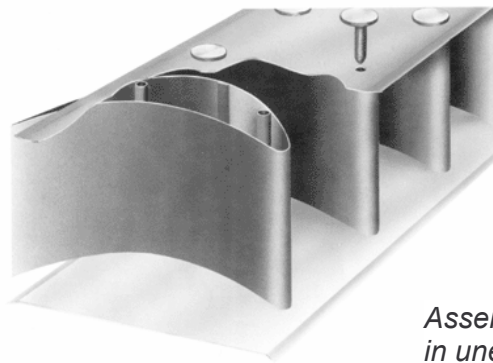
--- SUBMITTAL FORM ---

Please print and fill out this form for all submittals

Sheet No. HEP-65R2
 Aero/Dyne Company (800) 522.2423



VANES AND SIDE RAILS
 MADE IN THE USA



Assembly install
 in unequal elbows

SPECIFICATIONS ~

VANES: NO. 26 GAUGE HOT-DIPPED GALVANIZED STEEL, FURNISHED IN 10-FOOT LENGTHS.
SIDE RAIL: NO. 24 GAUGE HOT-DIPPED GALVANIZED STEEL, FURNISHED IN 100-FOOT COILS WITH FASTENERS, ASSEMBLY SLOTS ARE LOCATED ON DESIGN CENTER SPACING OF 2.4 INCHES.

An entire assembly of H•E•P turning vanes can be adjusted easily and precisely to the proper angle of attack, regardless of the inlet and outlet dimensions of the elbow. A narrow strip (approx. 3/4 inch) is sheared from the center of both top and bottom side rail pieces. Vanes are attached to them by the usual method of driving fasteners through the slots. All of the vanes in the assembly then move together as the correct alignment is made for the elbow, maintaining the leading and trailing edges in an exactly parallel relationship. **NO OTHER AVAILABLE PRODUCT PROVIDES THIS CAPABILITY.**

PROJECT:

ENGINEER:

LOCATION:

CONTRACTOR:

Specify Aero/Dyne's H-E-P vane and rail in your next project for the most efficient airflow performance and the lowest generated sound power levels and pressure drop. No other product on the market has this capability. **Visit our NEW website at www.HEPVanes.com** to learn how this remarkable product works. *Efficiency by Design from Aero/Dyne™*